

Deltronic Labs Adjuster Board, Version 4AX

Operating Instructions

The Adjuster Board adjusts the ticket payout of games that use a Deltronic Labs DL-1275 ticket dispenser. The Adjuster can be configured to either divide the payout by a set factor or to payout a "mercy" ticket.

Installation

Please refer to the diagram on page 2.

1. Turn the game power off.
2. Unplug the ticket dispenser from the game.
3. Connect the game to the Adjuster's DL-1275 input.
4. Connect the ticket dispenser to the Adjuster's output.
5. Turn the game power on.
6. LED 2 on the Adjuster should be lit dimly and pressing PB1 or PB2 should dispense 1 ticket. If this does not happen check the ticket dispenser troubleshooting guide.
7. Configure the Adjuster as described in the Configuration section on page 2.

For technical help call (215) 997-8616.

Help Mode

If the Adjuster detects a problem with the ticket dispenser, it enters Help mode. In Help mode both LED's blink and power is removed from the ticket dispenser so that the problem can be fixed without turning off the game. After fixing the problem, press PB1 or PB2. The Adjuster will then dispense any tickets that are owed, as long as power to the game was not removed.

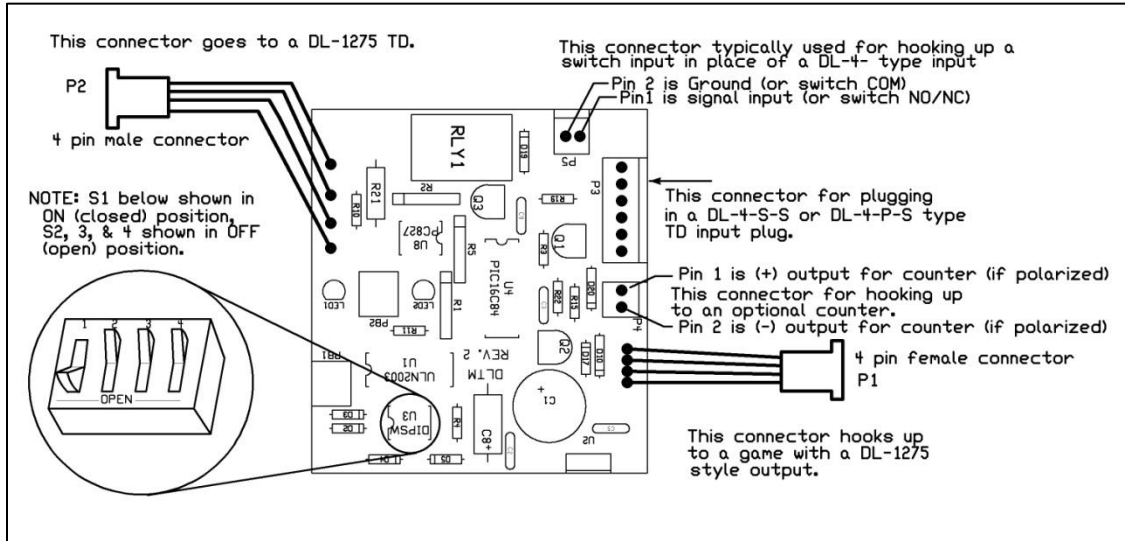
While in Help mode the Adjuster returns signals to the game so that the game does not enter an error mode. If the game does detect an error then the Adjuster is hooked up incorrectly or configured wrong.

For technical help call (215) 997-8616.

Configuration

To dispense a mercy ticket, connect a switch to P5. A common configuration is to use a coin switch for this. One ticket will be dispensed each time a switch closure is detected.

The Adjuster has 4 dip switches that are used to configure it.



1. Turn the power off.
2. Set the dip switches for the desired adjustment. After correctly setting the switches do not change them.

“Round down” causes any extra pulses to be dropped. For example: When dividing by 3, 7 pluses will give 2 tickets.

“Round up” causes extra pulses to give a ticket. For example: When dividing by 3, 8 pluses will give 3 tickets.

S1	S2	S3	S4	Description
on	on	on	X	Dispenser is disabled
OFF	on	on	X	Divide by 1 (no adjustment)
on	OFF	on	on	Divide by 2, round up
OFF	OFF	on	on	Divide by 3, round up
on	on	OFF	on	Divide by 4, round up
OFF	on	OFF	on	Divide by 5, round up
on	OFF	OFF	on	Divide by 6, round up
OFF	OFF	OFF	on	Divide by 7, round up
on	OFF	on	OFF	Divide by 2, round down
OFF	OFF	on	OFF	Divide by 3, round down
on	on	OFF	OFF	Divide by 4, round down
OFF	on	OFF	OFF	Divide by 5, round down
on	OFF	OFF	OFF	Divide by 6, round down
OFF	OFF	OFF	OFF	Divide by 7, round down

Off = switch open, On = switch closed. See diagram above.
X = Does not matter.

3. Turn the power on. (The adjuster reads the dip switches each time it powers up.)