

# Deltronic Labs Adjuster Board, Version 2AX

## Operating Instructions

The Adjuster Board adjusts the ticket payout of games that use a Deltronic Labs DL-1275, DL-4-SS, or DL-4-PS ticket dispenser. The Adjuster can be configured to either multiply or divide the payout by a set factor, or to give a fixed quantity of tickets instead of the normal payout.

### Installation

Please refer to the diagram on page 2.

If the game has a DL-1275 ticket dispenser:

1. Turn the game power off.
2. Unplug the ticket dispenser from the game.
3. Connect the game to the Adjuster's DL-1275 input.
4. Connect the ticket dispenser to the Adjuster's output.
5. Turn the game power on.
6. LED 2 on the Adjuster should be lit dimly and pressing PB1 or PB2 should dispense 1 ticket. If this does not happen check the ticket dispenser troubleshooting guide.
7. Configure the Adjuster as described in the Configuration section on page 2.

If the game has a DL-4-PS or DL-4-SS ticket dispenser:

1. Turn the game power off.
2. Unplug the ticket dispenser from the game.
3. Connect the game to the Adjuster's DL-4 input.
4. Change the board on the ticket dispenser to convert the DL-4 dispenser to a DL-1275 dispenser.
5. Connect the ticket dispenser to the Adjuster's output.
6. Turn the game power on.
7. LED 2 on the Adjuster should be lit dimly and pressing PB1 or PB2 should dispense 1 ticket. If this does not happen check the ticket dispenser troubleshooting guide.
8. Configure the Adjuster as described in the Configuration section on page 2.

For technical help call (215) 997-8616.

### Help Mode

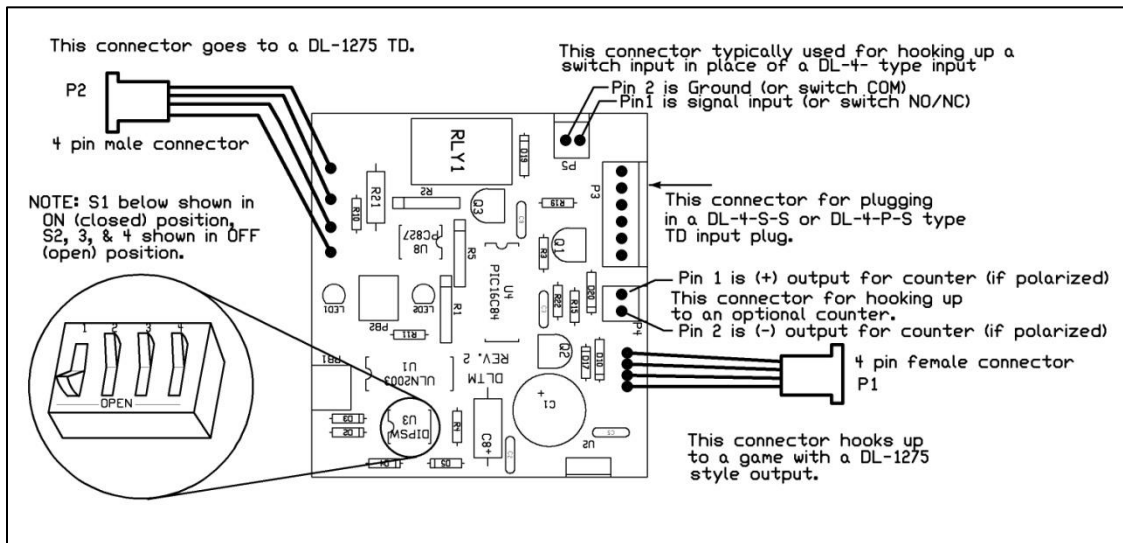
If the Adjuster detects a problem with the ticket dispenser, it enters Help mode. In Help mode both LED's blink and power is removed from the ticket dispenser so that the problem can be fixed without turning off the game. After fixing the problem, press PB1 or PB2. The Adjuster will then dispense any tickets that are owed, as long as power to the game was not removed.

While in Help mode the Adjuster returns signals to the game so that the game does not enter an error mode. If the game does detect an error then the Adjuster is hooked up incorrectly or configured wrong.

For technical help call (215) 997-8616.

# Configuration

The Adjuster has a 2 push buttons (PB1 and PB2) and a set of 4 dip switches that are used to configure it.



The Adjuster can accept a DL-1275 input and a DL-4 input. Each input can be configured for a different adjustment function. Configuring the Adjuster requires four readings of the dip switches. The first 2 readings configure the adjustment function for the DL-4 input. The last 2 readings configure the adjustment function for the DL-1275 input.

If you are using only one of the inputs, configure both inputs to the same function.

1. Connect the Adjuster to the game and the ticket dispenser. Then apply power.
2. To enter programming mode. Press PB1 and PB2 at the same time. LED 1 will start blinking.
3. Set the dip switches for the desired mode of operation for the DL-4 input (use Table 1). Mode 4 (Fixed) pays out the same number of tickets each time.

**Table 1**

S1	S2	S3	S4	Mode	Description
OFF	OFF	OFF	*	1	DIVIDE – drops remainder
OFF	on	OFF	*	2	DIVIDE – keeps remainder
on	OFF	OFF	*	3	MULTIPLY
on	on	OFF	*	4	FIXED

\* S4 is OFF for DL-4-SS, On for DL-4-PS.

Off = switch open, On = switch closed. See diagram above.

4. Press either PB1 or PB2 to read the dip switches. LED 1 will stop blinking and LED 2 will start blinking.
5. Set the dip switches for the value to use (see Table 2 on the next page). Be sure to use the column in this table that corresponds to the mode you selected in step 3. For example: To multiply the ticket payout by 10 select Mode 3 (multiply) in step 3 and select 10 in this step.

**Table 2**

<b>S1</b>	<b>S2</b>	<b>S3</b>	<b>S4</b>	<b>Mode 1 &amp; 2</b>	<b>Mode 3</b>	<b>Mode 4</b>
on	on	on	on	2	0	1
OFF	on	on	on	3	1	2
on	OFF	on	on	4	2	3
OFF	OFF	on	on	5	3	4
on	on	OFF	on	6	4	5
OFF	on	OFF	on	7	5	6
on	OFF	OFF	on	8	6	7
OFF	OFF	OFF	on	9	7	8
on	on	on	OFF	10	8	9
OFF	on	on	OFF	11	9	10
on	OFF	on	OFF	12	10	11
OFF	OFF	on	OFF	13	11	12
on	on	OFF	OFF	14	12	13
OFF	on	OFF	OFF	15	13	14
on	OFF	OFF	OFF	16	14	15
OFF	OFF	OFF	OFF	17	15	16

Off = switch open, On = switch closed. See diagram on page 1.

6. Press either PB1 or PB2 to read the dip switches. LED 2 will stop blinking and LED 1 will start blinking.
7. Set the dip switches for the desired mode of operation for the DL-1275 input (use Table 3).

**Table 3**

<b>S1</b>	<b>S2</b>	<b>S3</b>	<b>S4</b>	<b>Mode</b>	<b>Description</b>
OFF	OFF	OFF	OFF	1	DIVIDE – drops remainder
OFF	on	OFF	OFF	2	DIVIDE – keeps remainder
on	OFF	OFF	OFF	3	MULTIPLY
on	on	OFF	OFF	4	FIXED

Off = switch open, On = switch closed. See diagram on page 1.

8. Press either PB1 or PB2 to read the dip switches. LED 1 will stop blinking and the ticket dispenser will dispense one ticket.
9. Set the dip switches for the value to use (use Table 2 above). Be sure to use the column in this table that corresponds to the mode you selected in step 7. For example: To always payout 12 tickets select Mode 4 (fixed) in step 7 and select 12 in this step.
10. This fourth reading of the switches is done each time the adjuster powers up. Turn the power off and back on to read the switches.

## **Factory Default Configuration**

As shipped from Deltronic Labs, both inputs are set to multiply by 2. The DL-4 input is set for DL-4-SS.